



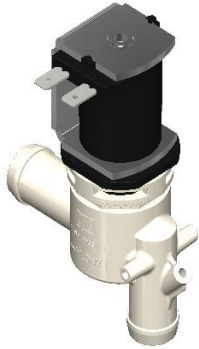
**RPE srl**  
elettrovalvole

**rpesrl.com**

☎ 0331 832515

✉ [customer care@rpesrl.it](mailto:customer care@rpesrl.it)

## 800D Drain/Dump Valve

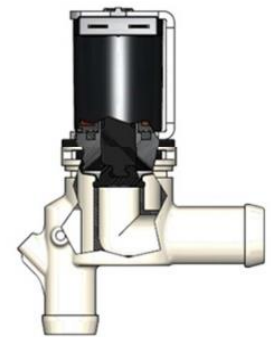


The 800D is a 2-Way, Direct-Acting, gravity fed Drain/Dump Solenoid Valve developed to dispense water from a tank or similar media, designed for **Professional Cleaning & Floor Scrubber equipment, Commercial Ice machines, Tank/Boiler draining systems and Beverage equipment applications.**

A Drain or Dump Valve is used to purge the water trough before making ice or to drain the dirty water from a floor scrubber down the drain. This allows the equipment it is installed in to flush any minerals or debris out, maintaining the machine in optimal conditions and reducing its service time.

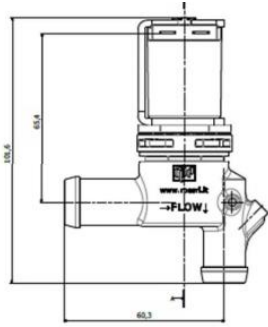
### **Features and Benefits**

- The 800D valve delivers high flow output with minimal head pressure.
- Twist-lock bayonet connection for easy service and maintenance without the need for tools.
- Multiple Connection Options.
- Encapsulated coil provides high mechanical and dielectric strength and moisture resistant.
- Body is made of PA 66 GF30 NAT and Diaphragm of durable (LSR) Silicone with a chemical resistant construction to withstand a variety of harsh water conditions.
- Suitable for applications using water at temperatures up to 90°C (194°F)
- Multiple bracket options



The Pilot-operated diaphragm provides high flow capacity with minimum power requirements and its unique diaphragm design reduces unwanted particles from entering the armature area, which is designed with clearances that minimize the possibility of jamming due to foreign materials.

## Characteristics



Valve Body Material: PA 66 GF30 NAT

Diaphragm Material: (LSR) Silicone

Assembly: Bayonet

Flow direction: Unidirectional

Nominal Diameter: Ø 12.75 mm

Working pressure: 0 – 0.18 bar

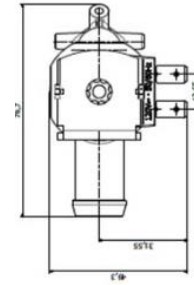
Room temperature: 0 - 60°C (0 - 140° F)

Fluid temperature: 0 - 90°C (0 – 194° F)

Control: Drain valve – with a Vent or without a Vent Hydraulic connections

Inlet: Hose Tail 18 mm ¾" Male Thread BSPP (G)

Outlet: Hose Tail 16 mm (possibility of a Vent for a laminar flow)



## Operating Specifications

Coil Voltages: 120V AC, 230V AC, 24V AC & 24VDC

Control: Normally Close

Coil Terminals: Faston male connections 6.3 x 0.8 mm

Duty Cycle: 100% Intermittent = 4 mins On / 5 mins Off

Orifice Nominal Diameter: 12.75 mm

Insulation Class: Class F 155° C (311° F)

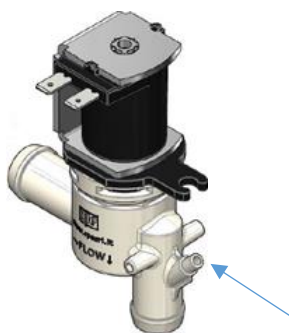
Ambient Temperature: 0 to 60° C (140° F)

Installation: Horizontal position

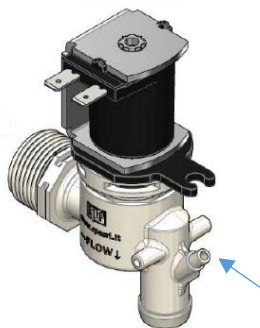
Mounting Bracket: Optional

Inlet / Outlet connection: See data sheet for available options

Agency Approvals: , MOCA/FCM, NSF, WRAS, KTW, UL, ENEC



800DV Series - Hose Tail 18mm



800DV Series - ¾" Male Thread

Each of these two versions are available with a VENT to help drain the water from the line, allowing it to maintain a cleaner system.